



FULL-BODY

FLINT

8 cores / colours / couleurs / colores
 5 formatos / formats / formats / formatos
 4 acabamentos / finishes / finitions / acabados

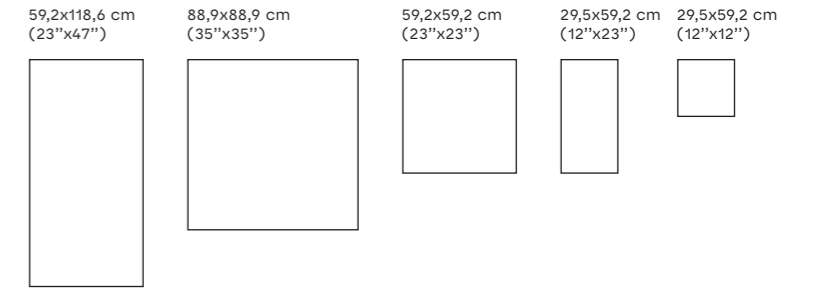


A versatilidade e elevada durabilidade do grés porcelânico toda a massa.

The versatility and high durability of full-body porcelain tiles.

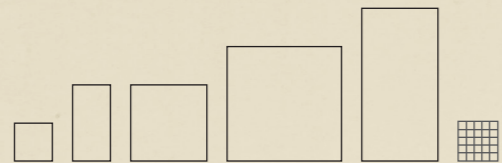
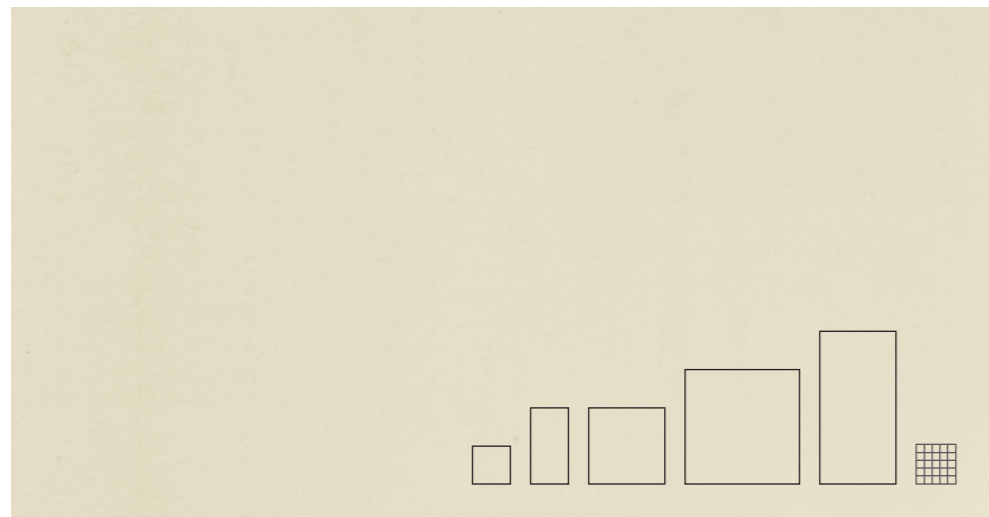
La versatilité et la haute durabilité du grés cérame pleine masse.

La versatilidad y elevada durabilidad del gres porcelánico todo masa.



RECT · SOFT · POL · ESTR



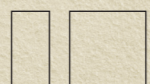
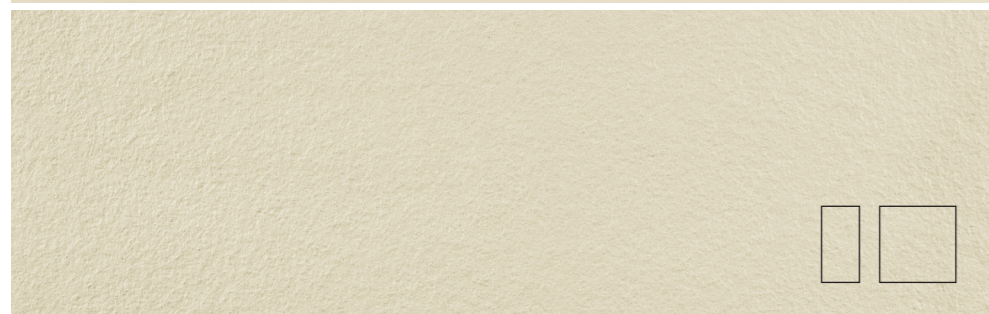


FLINT MARFIM

3121126421	29,5x29,5x0,85 cm	RECT	P94
3126126421	29,5x29,5x0,85 cm	SOFT	P94
3122126421	29,5x29,5x0,80 cm	POL	P110
3121216421	29,5x59,2x0,85 cm	RECT	P91
3126215Y31	29,5x59,2x0,85 cm	SOFT	P91
3122216421	29,5x59,2x0,80 cm	POL	P105
3121136421	59,2x59,2x0,85 cm	RECT	P102
3126135Y31	59,2x59,2x0,85 cm	SOFT	P102
3122136421	59,2x59,2x0,80 cm	POL	P112
3121D36421	59,2x118,6x0,98 cm	RECT	P120
3126D35Y31	59,2x118,6x0,98 cm	SOFT	P120
3122D36421	59,2x118,6x0,93 cm	POL	P137
3121K76421	88,9x88,9x1,05 cm	RECT	P120
3126K76421	88,9x88,9x1,05 cm	SOFT	P120
3122K76421	88,9x88,9x0,98 cm	POL	P137

FLINT MARFIM ESTR

3121215R31	29,5x59,2x0,85 cm	RECT	P91
3121135R31	59,2x59,2x0,85 cm	RECT	P102

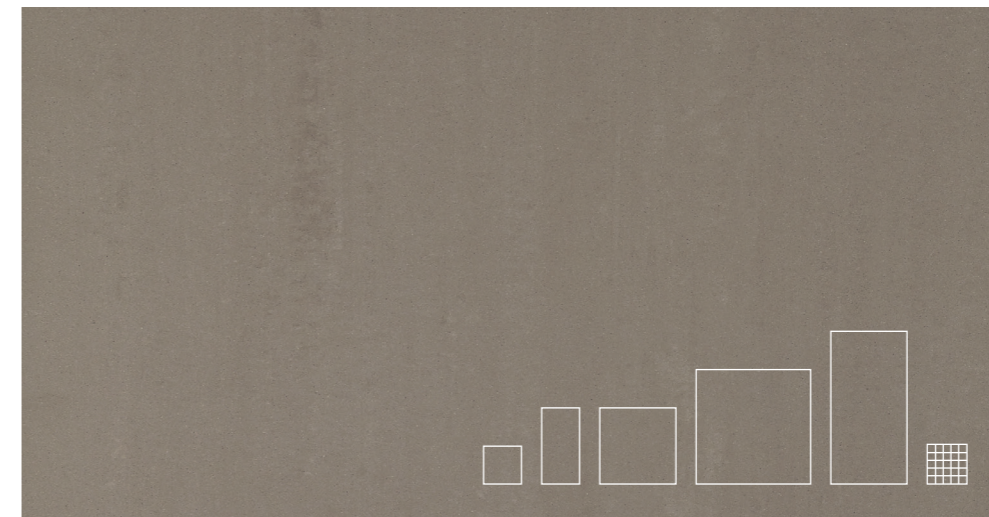


FLINT PLATINA

3121126431	29,5x29,5x0,85 cm	RECT	P89
3126126431	29,5x29,5x0,85 cm	SOFT	P89
3122126431	29,5x29,5x0,80 cm	POL	P101
3121216431	29,5x59,2x0,85 cm	RECT	P85
3126216431	29,5x59,2x0,85 cm	SOFT	P85
3122216431	29,5x59,2x0,80 cm	POL	P98
3121136431	59,2x59,2x0,85 cm	RECT	P94
3126136431	59,2x59,2x0,85 cm	SOFT	P94
3122136431	59,2x59,2x0,80 cm	POL	P110
3121D36431	59,2x118,6x0,98 cm	RECT	P114
3126D36431	59,2x118,6x0,98 cm	SOFT	P114
3122D36431	59,2x118,6x0,93 cm	POL	P130
3121K76431	88,9x88,9x1,05 cm	RECT	P114
3126K76431	88,9x88,9x1,05 cm	SOFT	P114
3122K76431	88,9x88,9x0,98 cm	POL	P130

FLINT PLATINA ESTR

3121217301	29,5x59,2x0,85 cm	RECT	P85
3121137301	59,2x59,2x0,85 cm	RECT	P94

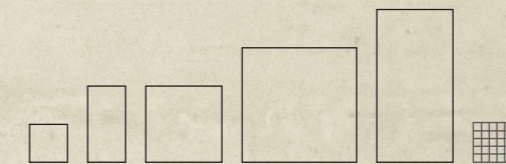


FLINT ARG PRATA

3121126441	29,5x29,5x0,85 cm	RECT	P89
3126126441	29,5x29,5x0,85 cm	SOFT	P89
3122126441	29,5x29,5x0,80 cm	POL	P101
3121216441	29,5x59,2x0,85 cm	RECT	P85
3126216441	29,5x59,2x0,85 cm	SOFT	P85
3122216441	29,5x59,2x0,80 cm	POL	P98
3121136441	59,2x59,2x0,85 cm	RECT	P94
3126136441	59,2x59,2x0,85 cm	SOFT	P94
3122136441	59,2x59,2x0,80 cm	POL	P110
3121D3W441	59,2x118,6x0,98 cm	RECT	P114
3126D36441	59,2x118,6x0,98 cm	SOFT	P114
3122D36441	59,2x118,6x0,93 cm	POL	P130
3121K76441	88,9x88,9x1,05 cm	RECT	P114
3126K76441	88,9x88,9x1,05 cm	SOFT	P114
3122K76441	88,9x88,9x0,98 cm	POL	P130

FLINT ARG PRATA ESTR

3121215R01	29,5x59,2x0,85 cm	RECT	P85
3121135R01	59,2x59,2x0,85 cm	RECT	P94

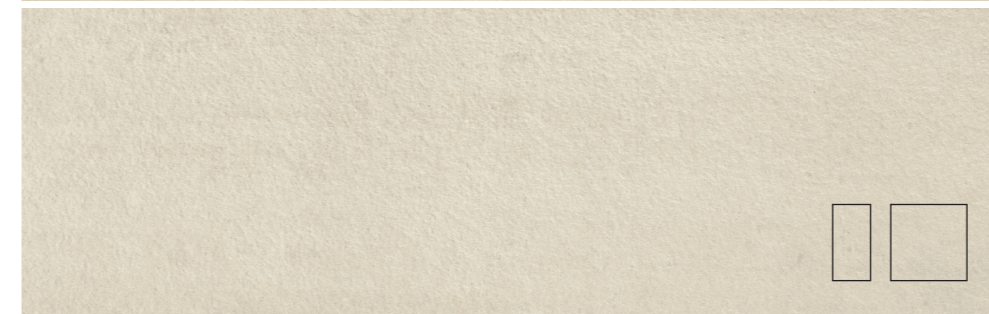


FLINT ICE

312112S881	29,5x29,5x0,85 cm	RECT	P98
312612S881	29,5x29,5x0,85 cm	SOFT	P98
312212S881	29,5x29,5x0,80 cm	POL	P114
312121S881	29,5x59,2x0,85 cm	RECT	P94
312621S881	29,5x59,2x0,85 cm	SOFT	P94
312221S881	29,5x59,2x0,80 cm	POL	P110
312113S881	59,2x59,2x0,85 cm	RECT	P105
312613S881	59,2x59,2x0,85 cm	SOFT	P105
312213S881	59,2x59,2x0,80 cm	POL	P119
3121D3S881	59,2x118,6x0,98 cm	RECT	P123
3126D3S881	59,2x118,6x0,98 cm	SOFT	P123
3122D3S881	59,2x118,6x0,93 cm	POL	P140
3121K7S881	88,9x88,9x1,05 cm	RECT	P123
3126K7S881	88,9x88,9x1,05 cm	SOFT	P123
3122K7S881	88,9x88,9x0,98 cm	POL	P140

FLINT ICE ESTR

312121T051	29,5x59,2x0,85 cm	RECT	P94
312113T051	59,2x59,2x0,85 cm	RECT	P105

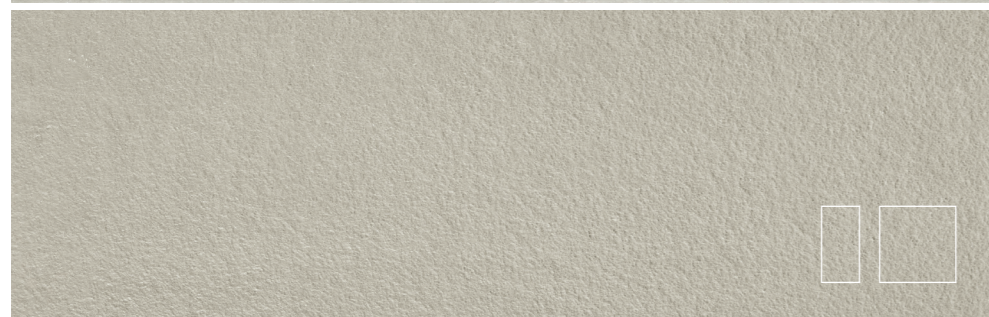
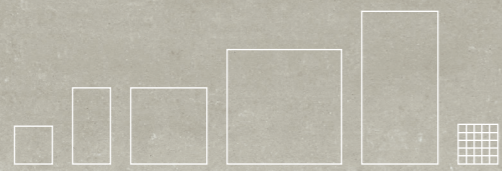


29,5x59,2 · 59,2x59,2 · 59,2x118,6 · 44,35x88,9 · 88,9x88,9 cm	SOFT	V2	5	—	—	—	—	—	—	
29,5x59,2 · 59,2x59,2 · 59,2x118,6 · 44,35x88,9 · 88,9x88,9 cm	POL	V3	3	—	—	—	—	—	U3P3E3C2	
29,5x29,5 · 59,2x59,2 cm	RECT · MATT RECT	V2	5	class 2	A	R10	36+	≥0,42	U4P4E3C2	
29,5x59,2 · 59,2x118,6 · 88,9x88,9 cm	RECT · MATT RECT	V2	5	class 2	A	R10	36+	≥0,42	U4P3E3C2	
29,5x59,2 cm	ESTR	RECT	V2	5	class 3	B	R11	36+	≥0,42	U4P3E3C2
59,2x59,2 cm	ESTR	RECT	V2	5	class 3	B	R11	40+	≥0,42	U4P4E3C2



STRATUS 36 (a)(f)

29,5x29,5x0,85 cm	RECT	P19 /peça_pieza
[1m² = 11 peças_piezas]		



FLINT GLACIAR

312112S871	29,5x29,5x0,85 cm	RECT	P98
312612S871	29,5x29,5x0,85 cm	SOFT	P98
312212S871	29,5x29,5x0,80 cm	POL	P114
312121S871	29,5x59,2x0,85 cm	MATT RECT	P94
312621S871	29,5x59,2x0,85 cm	SOFT	P94
312221S871	29,5x59,2x0,80 cm	POL	P110
312113S871	59,2x59,2x0,85 cm	MATT RECT	P105
312613S871	59,2x59,2x0,85 cm	SOFT	P105
312213S871	59,2x59,2x0,80 cm	POL	P119
3121D3S871	59,2x118,6x0,98 cm	MATT RECT	P123
3126D3S871	59,2x118,6x0,98 cm	SOFT	P123
3122D3S871	59,2x118,6x0,93 cm	POL	P140
3121K7S871	88,9x88,9x1,05 cm	MATT RECT	P123
3126K7S871	88,9x88,9x1,05 cm	SOFT	P123
3122K7S871	88,9x88,9x0,98 cm	POL	P140

FLINT GLACIAR ESTR

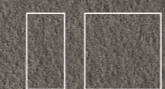
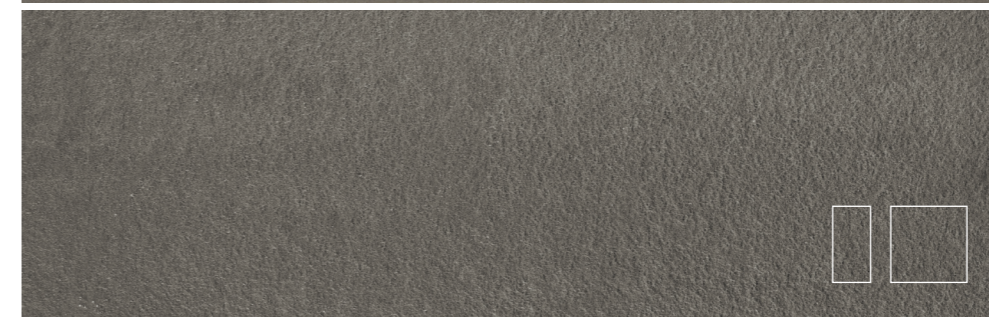
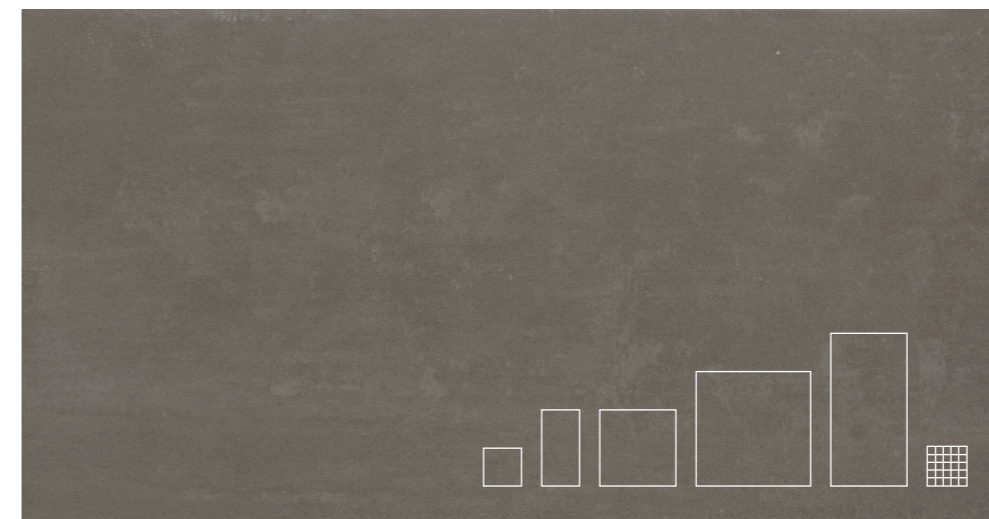
312121T041	29,5x59,2x0,85 cm	RECT	P94
312113T041	59,2x59,2x0,85 cm	RECT	P105

FLINT FOG

312112R831	29,5x29,5x0,85 cm	RECT	P89
312612R831	29,5x29,5x0,85 cm	SOFT	P89
312212R831	29,5x29,5x0,80 cm	POL	P101
312121R831	29,5x59,2x0,85 cm	MATT RECT	P85
312621R831	29,5x59,2x0,85 cm	SOFT	P85
312213R831	29,5x59,2x0,80 cm	POL	P98
312113R831	59,2x59,2x0,85 cm	MATT RECT	P94
312613R831	59,2x59,2x0,85 cm	SOFT	P94
312213R831	59,2x59,2x0,80 cm	POL	P110
3121D32U31	59,2x118,6x0,98 cm	MATT RECT	P114
3126D3R831	59,2x118,6x0,98 cm	SOFT	P114
3122D3R831	59,2x118,6x0,93 cm	POL	P130
3121K7R831	88,9x88,9x1,05 cm	MATT RECT	P114
3126K7R831	88,9x88,9x1,05 cm	SOFT	P114
3122K7R831	88,9x88,9x0,98 cm	POL	P130

FLINT FOG ESTR

3121215R11	29,5x59,2x0,85 cm	RECT	P85
3121135R11	59,2x59,2x0,85 cm	RECT	P94



FLINT GRIS

312112R841	29,5x29,5x0,85 cm	RECT	P89
312612R841	29,5x29,5x0,85 cm	SOFT	P89
312212R841	29,5x29,5x0,80 cm	POL	P101
312121R841	29,5x59,2x0,85 cm	MATT RECT	P85
312621R841	29,5x59,2x0,85 cm	SOFT	P85
312221R841	29,5x59,2x0,80 cm	POL	P98
312113R841	59,2x59,2x0,85 cm	MATT RECT	P94
312613R841	59,2x59,2x0,85 cm	SOFT	P94
312213R841	59,2x59,2x0,80 cm	POL	P110
3121D3R841	59,2x118,6x0,98 cm	MATT RECT	P114
3126D3R841	59,2x118,6x0,98 cm	SOFT	P114
3122D3R841	59,2x118,6x0,93 cm	POL	P130
3121K7R841	88,9x88,9x1,05 cm	MATT RECT	P114
3126K7R841	88,9x88,9x1,05 cm	SOFT	P114
3122K7R841	88,9x88,9x0,98 cm	POL	P130

FLINT GRIS ESTR

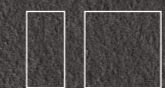
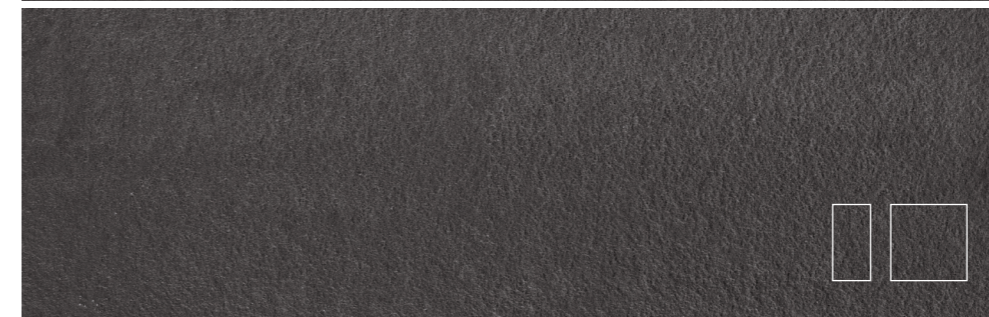
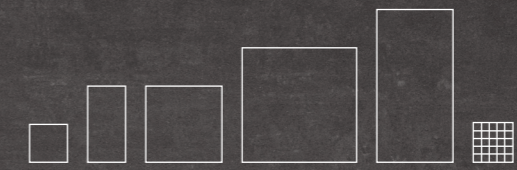
3121216R31	29,5x59,2x0,85 cm	RECT	P85
3121136R31	59,2x59,2x0,85 cm	RECT	P94

FLINT PRETO

312112R761	29,5x29,5x0,85 cm	RECT	P89
312612R761	29,5x29,5x0,85 cm	SOFT	P89
312212R761	29,5x29,5x0,80 cm	POL	P101
312121R761	29,5x59,2x0,85 cm	MATT RECT	P85
312621R761	29,5x59,2x0,85 cm	SOFT	P85
312213R761	29,5x59,2x0,80 cm	POL	P98
312113R761	59,2x59,2x0,85 cm	MATT RECT	P94
312613R761	59,2x59,2x0,85 cm	SOFT	P94
312213R761	59,2x59,2x0,80 cm	POL	P110
3121D3R761	59,2x118,6x0,98 cm	MATT RECT	P114
3126D3R761	59,2x118,6x0,98 cm	SOFT	P114
3122D3R761	59,2x118,6x0,93 cm	POL	P130
3121K7R761	88,9x88,9x1,05 cm	MATT RECT	P114
3126K7R761	88,9x88,9x1,05 cm	SOFT	P114
3122K7R761	88,9x88,9x0,98 cm	POL	P130

FLINT PRETO ESTR

3121215R41	29,5x59,2x0,85 cm	RECT	P85
3121135R41	59,2x59,2x0,85 cm	RECT	P94



29,5x59,2 · 59,2x59,2 · 59,2x118,6 · 44,35x88,9 · 88,9x88,9 cm	SOFT	V2	5	—	—	—	—	—	—
29,5x59,2 · 59,2x59,2 · 59,2x118,6 · 44,35x88,9 · 88,9x88,9 cm	POL	V3	3	—	—	—	—	—	U3P3E3C2
29,5x29,5 · 59,2x59,2 cm	RECT · MATT RECT	V2	5	class 2	A	R10	36+	≥0,42	U4P4E3C2
29,5x59,2 · 59,2x118,6 · 88,9x88,9 cm	RECT · MATT RECT	V2	5	class 2	A	R10	36+	≥0,42	U4P3E3C2
29,5x59,2 cm ESTR	RECT	V2	5	class 3	B	R11	36+	≥0,42	U4P3E3C2
59,2x59,2 cm ESTR	RECT	V2	5	class 3	B	R11	40+	≥0,42	U4P4E3C2

Estruturado _ Structured: Produtos que minimizam o risco de deslizamento.
Estruturado _ Structured: Products that minimize the risk of slipping.
Estruturado _ Structured: Produits qui réduisent le risque de glissement.
Estruturado _ Structured: Productos que minimizan el riesgo de deslizamiento.



STRATUS 36 (a)(f)
 29,5x29,5x0,85 cm RECT P19 /peça_piece
 [1m² = 11 peças_pieces]



FLINT ARG PRATA _ FLINT MARFIM



	PEÇAS · PIECES	±	CAIXA · BOX			EUROPALETE · EUROPALLET		
			PZ	M ²	KG	CX	M ²	KG
29,5x29,5 cm	RECT · MATT RECT · SOFT	8,5 ±5%	16	1.39	28.8	40	55.60	1173
	POL	8,0 ±5%	16	1.39	25.6	40	55.60	1045
29,5x59,2 cm	RECT · MATT RECT · SOFT · ESTR	8,5 ±5%	8	1.40	28.8	32	44.80	943
	POL	8,0 ±5%	8	1.40	25.6	40	56.00	1045
59,2x59,2 cm	RECT · MATT RECT · SOFT · ESTR	8,5 ±5%	4	1.40	28.7	36	50.40	1053
	POL	8,0 ±5%	4	1.40	26.7	36	50.40	981
59,2x118,6 cm	RECT · MATT RECT · SOFT	9,8 ±5%	2	1.40	33.0	30	42.00	1011
	POL	9,3 ±5%	2	1.40	31.0	30	42.00	951
88,9x88,9 cm	RECT · MATT RECT · SOFT	10,5 ±0,5 mm	2	1.58	39.0	24	37.92	991
	POL	9,8 ±5%	2	1.58	37.0	24	37.92	943

DG	RECT RECT ESTR SOFT	POL	RB	RECT RECT ESTR SOFT	POL	BR	RECT RECT ESTR SOFT	POL	TC	RECT RECT ESTR SOFT	POL
29,5x29,5 cm	P10	P10	9,5x29,5 cm	P08	P08	7x29,5 cm	P06	P06	7x7 cm	P01	P02
29,5x59,2 cm	P18	P18	8x59,2 cm	P12	P12	7x59,2 cm	P09	P09			
59,2x59,2 cm	P36	P36	8x88,9 cm	P28	P28						
44,35x88,9 cm	P96	P96	8x118,6 cm	P28	P28						
29,5x118,6 cm	P96	P96									
59,2x118,6 cm	P167	P167									

DG CF	MATT RECT SOFT	POL	DG CF SS	MATT RECT SOFT	POL	DG CF CANTO	MATT RECT SOFT	POL
29,5x59,2 cm	P157	P157	29,5x59,2 cm	P157	P157	29,5x59,2 cm	P207	P207

DG CF / DG CF Canto/DG CF SS: Peças produzidas sob encomenda. Altura do focinho: entre 3 cm e 10 cm. Indicar a altura pretendida no ato da encomenda.

DG CF / DG CF Canto/DG CF SS: Pieces produced on order. Trim height: 3 to 10 cm. Specify desired height when placing a order.

DG CF / DG CF Canto/DG CF SS: Pièces produites sur commande. Hauteur du nez de marche : entre 3 cm et 10 cm. Préciser la hauteur souhaitée lors de la commande.

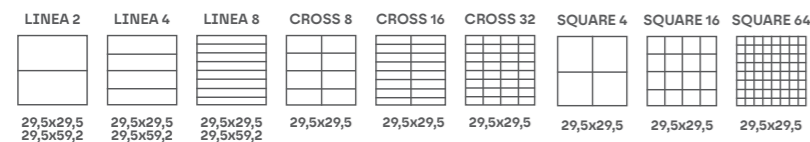
DG CF / DG CF Canto/DG CF SS: Piezas producidas por encargo. Altura del ángulo: entre 3 y 10 cm. Indicar la altura deseada al realizar el pedido.

DG CF Canto: Disponível em canto esquerdo e direito.

DG CF Canto: Available in left and right corner.

DG CF Canto: Disponible en angle gauche et droit.

DG CF Canto: Canto izquierdo y derecho disponibles.



Pág. 44

De modo a proteger a superfície das peças, os produtos no acabamento polido têm uma fina camada de impermeabilizante, que apenas deve ser removida após a conclusão da obra.
 Tiles with polished finish are protected with waterproof coating that must be removed only after the works are concluded.
 En vue de protéger la surface des pièces, les produits à la finition polie ont une fine couche d'imperméabilisant qui ne devrait être enlevée qu'après l'achèvement des travaux.
 Con el fin de proteger la superficie de las piezas, los productos con acabado pulido tienen una fina capa de impermeabilizante, que solo debe eliminarse una vez terminado el trabajo.
 Os desenhos das peças intensificam-se no acabamento polido, aumentando a variação de desenhos e de cores, entre peças.
 The designs of the pieces are more intense in the polished finish, enhancing design and colour variation across pieces.
 Les dessins des pièces s'intensifient avec la finition polie, augmentant la variation des dessins et des couleurs entre les pièces.
 Los diseños de las piezas se intensifican con el acabado pulido, aumentando la variación de diseños y colores entre las piezas.

GRAPHIC VARIATION

